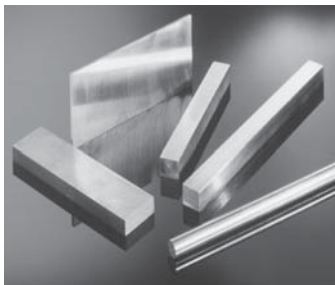
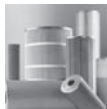
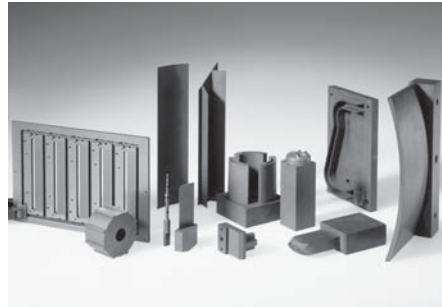
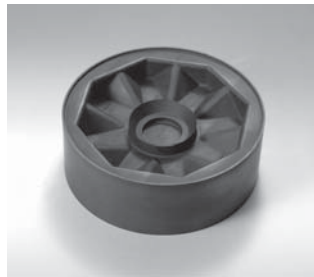
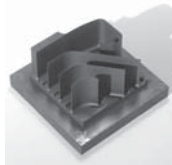


www.tri-gemini.com

Make Tri-Gemini *Your First Call for* Custom Machining, Graphite & EDM Sinkers Supplies 800-561-6250





Custom Machining, Graphite & EDM Sinker Supplies

800-561-6250

www.tri-gemini.com

Custom Machining/Manufacturing

- A complete facility for manufacturing custom EDM sinking electrodes to your exact specifications, either graphite or metallic, as well as graphite components for non-EDM applications
- CNC milling (incl. multiple high performance machining centers w/high speed spindles)
- CNC turning
- Precision grinding –
 - Surface
 - Cylindrical
 - Centerless
 - Profile
- CAD/CAM
- Simple to complex; guaranteed accuracies
- Will work from your drawings, IGES and DXF or other CAD files via the Internet, or send us

Metallic & Special Purpose Electrodes

- Copper tungsten
- Tellurium copper
- Tungsten wire electrodes
- Tungsten carbide rods & tubing
- Tapping electrodes – copper graphite, straight or orbiting, NPT, metric
- Special alpha/numeric characters
- 3 Ready-to-Run Electrode Blanks

Graphite

- Master distributor for all POCO EDM grades
- Micro-graph® and TTK brands
- Premium grades and fine grains
- Rough blocks to precision pre-finishing
- Copper-impregnated
- Tubular graphite electrodes
- Precision-machined blanks; pre-mounted on your holders or prepared for mountings
- Tapping electrodes

Sinking Supplies & Accessories

- Master distributor for the complete Commonwealth family of premium dielectric fluids, including EDM-244™, Vitality™, EDM Super Supreme™ and EuroSupreme™; and dielectric system cleaning agents
- BP 180 & 200 dielectric fluids
- Filters (incl. Ebbco filtration systems)
- Tooling systems & components
- Oil-feeding tubing chucks
- Torit dust collectors
- Westhoff electrode drilling machine
- Electro-Glove
- Grinding wheels for graphite



2001 Parkes Drive • Broadview, IL 60155
Ph: 800-561-6250 or 708-786-4300 • Fax: 708-681-6280
www.tri-gemini.com • E-mail: sales@tri-gemini.com